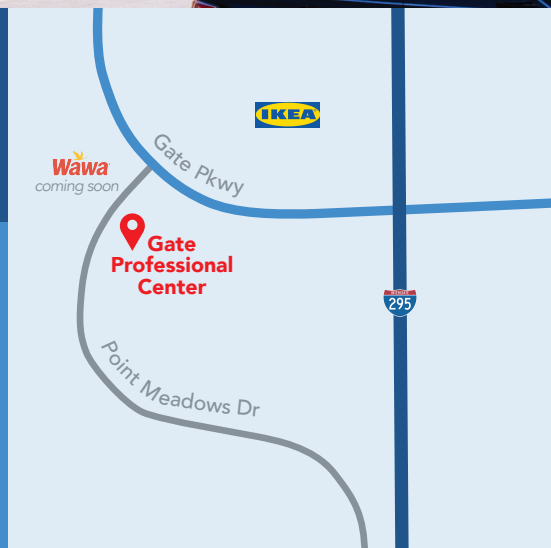




GATE PROFESSIONAL CENTER

7741 Point Meadows Dr | Jacksonville, FL 32256

- ♦ Conveniently located ¼ mile from JTB off I-295, across from IKEA
- ♦ Desirably positioned just minutes from local banks & popular area restaurants at St. John's Town Center
- ♦ High traffic location boasts flourishing residential growth & business expansion



SIZE

Total
28,000 sf±

Divisible Space
725 sf±

Contiguous Space
3,093 sf±

DEMOGRAPHICS

	Population	Total Households	Average HH Income
1 Mi	6,776	2,967	\$119,916
3 Mi	59,987	26,303	\$91,336
5 Mi	140,147	59,493	\$93,030

TRAFFIC

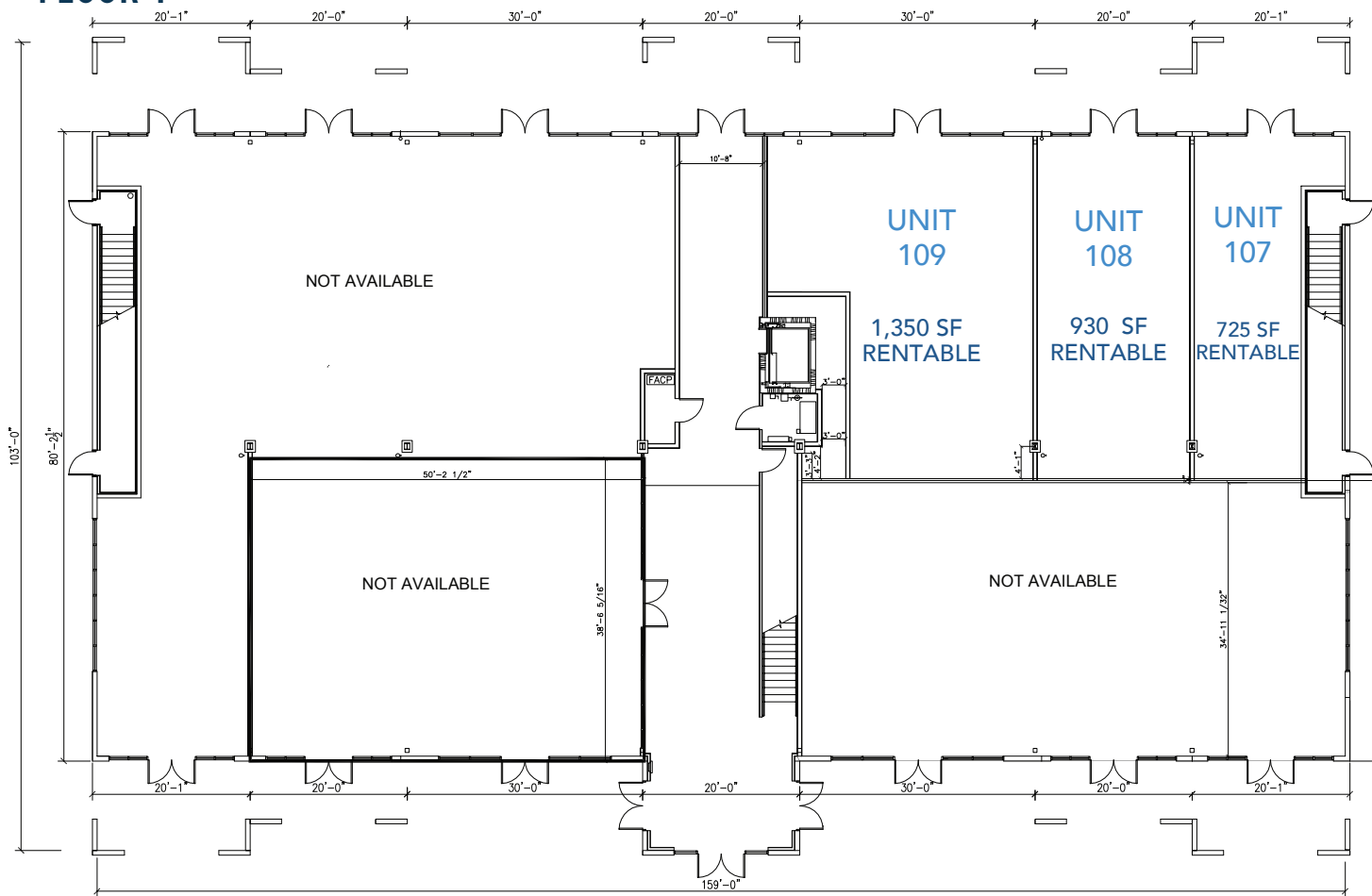
Gate Pkwy
17,600

I-295
107,000

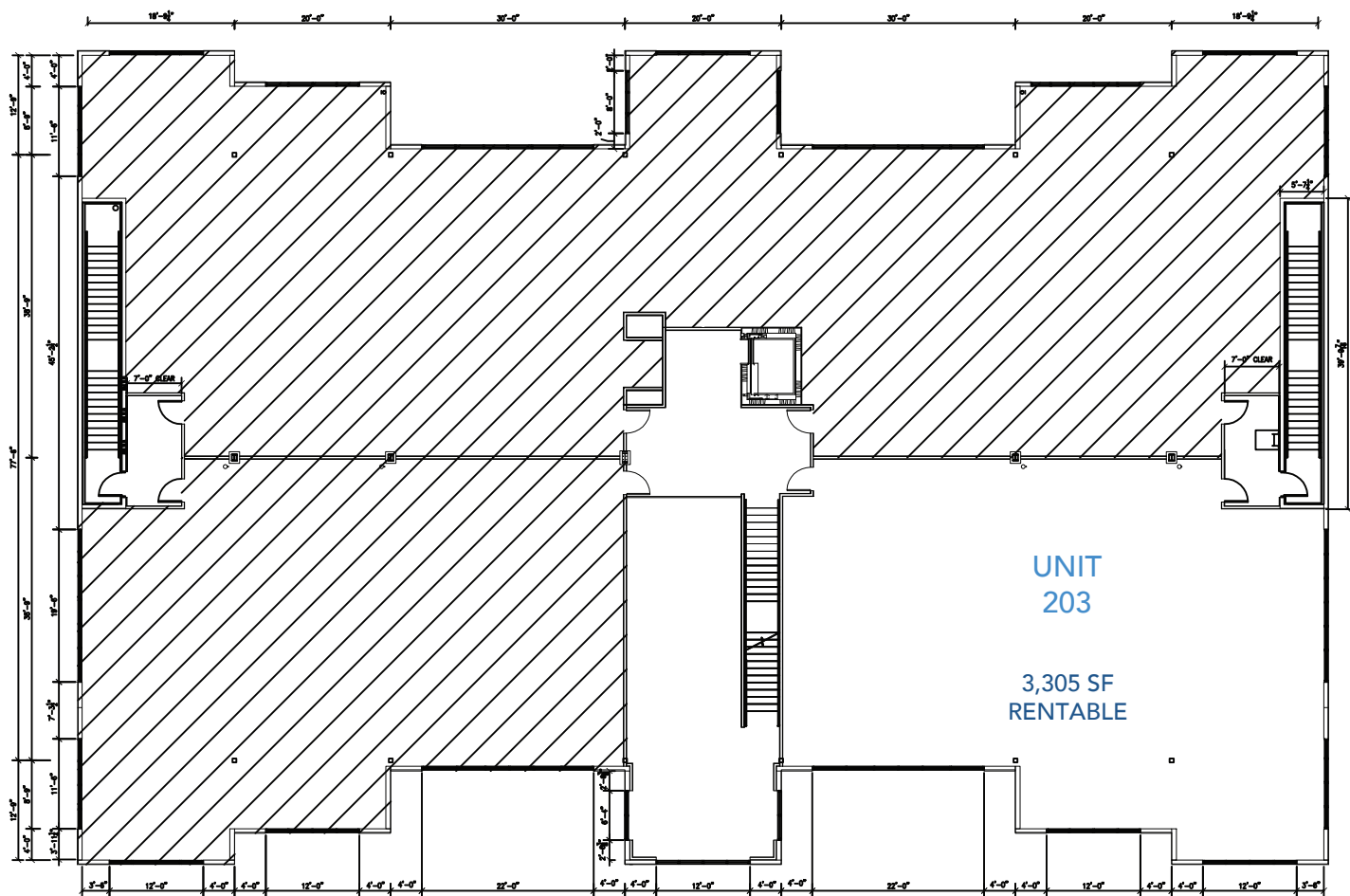
SITE MAP

Gate Professional Center | 7741 Point Meadows Dr | Jacksonville, FL 32256

FLOOR 1



FLOOR 2



FOR MORE INFO ashproperties.com leasing@ashproperties.com 904.992.9000