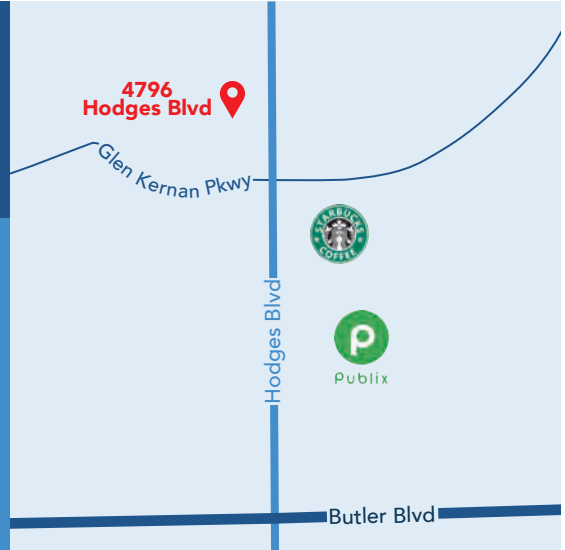




# HODGES COMMONS

4796 Hodges Blvd | Jacksonville, FL 32224

- Conveniently located on Hodges Blvd ½ mile from JTB at the entrance to Glen Kernan
- Ideal for medical & executive offices, corporate businesses, specialty retail
- High traffic counts, frontage & visibility



## SIZE

Building Size  
**25,900 sq ft±**

Divisible Space  
**1,261 sq ft±**

Contiguous Space  
**9,381 sq ft±**

## DEMOGRAPHICS

	Population	Total Households	Average HH Income
1 Mi	<b>10,074</b>	<b>4,381</b>	<b>\$118,775</b>
3 Mi	<b>44,882</b>	<b>17,770</b>	<b>\$132,986</b>
5 Mi	<b>152,571</b>	<b>62,164</b>	<b>\$124,273</b>

## TRAFFIC

Hodges Blvd  
**26,000**

Butler Blvd  
**111,500**

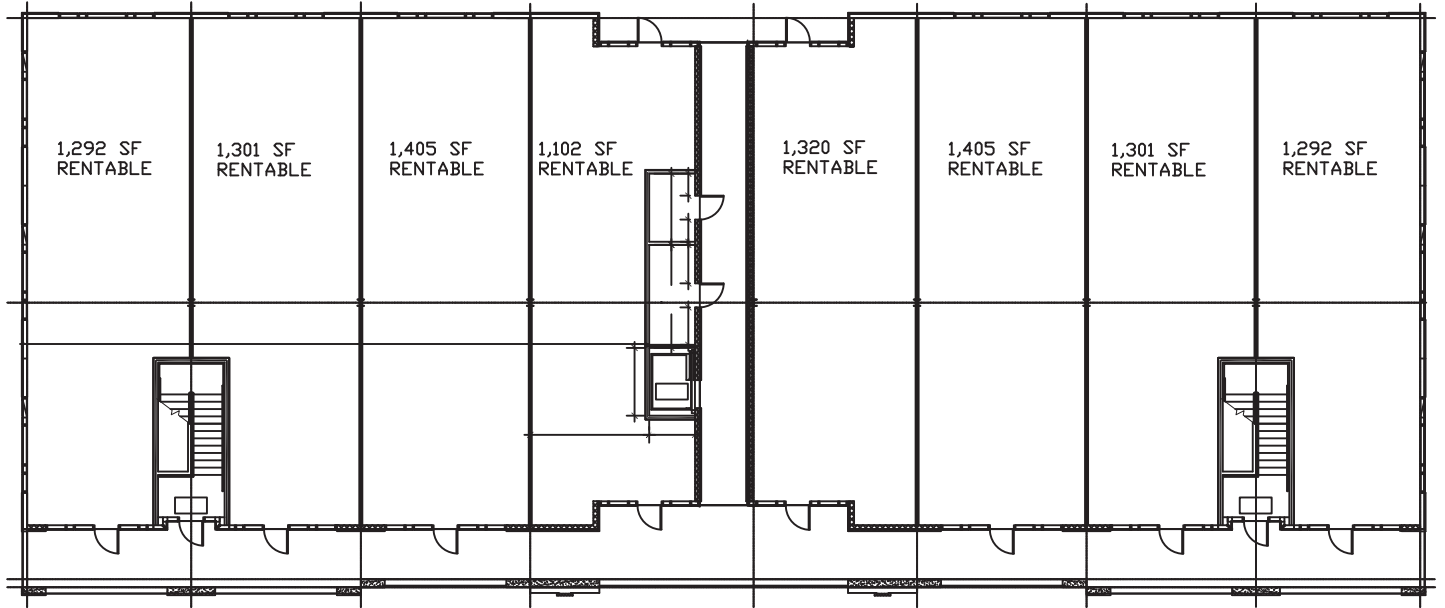
# PHOTOS

Hodges Commons | 4796 Hodges Blvd | Jacksonville, FL 32224



FOR MORE INFO  [ashproperties.com](https://www.ashproperties.com)  [leasing@ashproperties.com](mailto:leasing@ashproperties.com)  904.992.9000

## FLOOR 1



## FLOOR 2

